

# **Whistler Nordics Ski Club**

**2012-13 Season Round-Up**

**4 May 2013**

**Suki Cheyne**





# Club Summary

Whistler Nordics ski on local trails maintained by various land owners:  
Lost Lake: 32 km ~ Whistler Olympic Park: 55 km ~ Callaghan Country: 42 km

Membership: 221

Youth: 112

Adults: 109





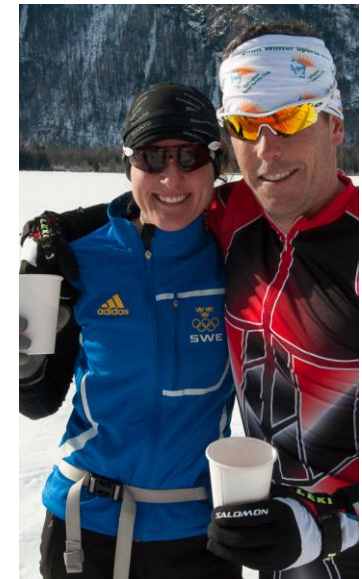
# Club Summary

SDP: 101

Bunnies (6), Jack Rabbits (54), Track Attack (12)  
Track Attack Race Team (13) Age 10-12  
Development Race Team (8) Age 13-19  
High School Program (8)

Masters: 53

Weds PM Intermediate/Advanced, Weds AM Classic,  
Thurs AM Tune-Up I, II, Mon PM Learn to Skate





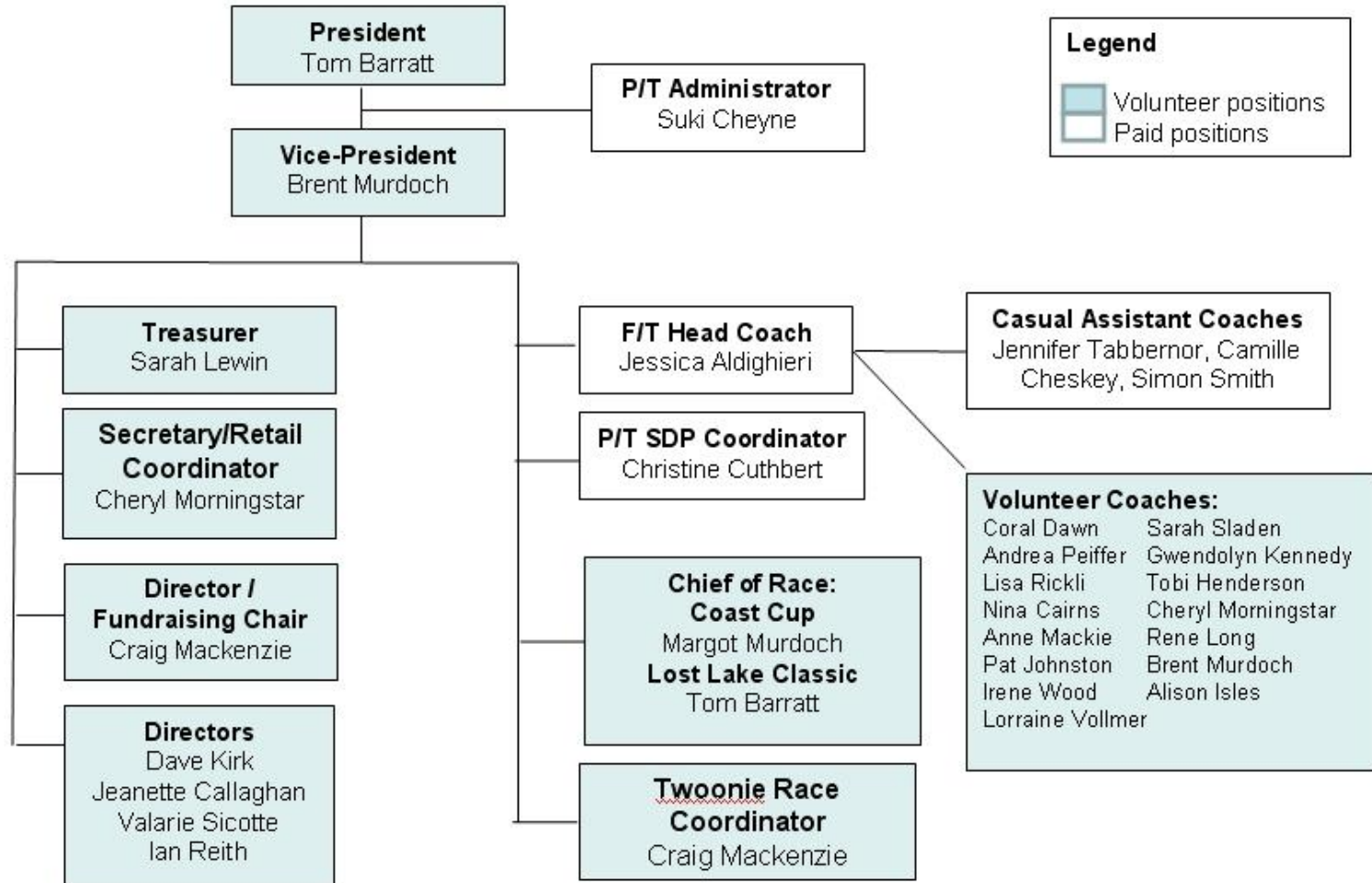
# Club Summary

Events:

Ski SWAP, Coast Cup #2, Lost Lake Classic  
NCCP CC, NCCP L2T On-Snow  
Twoonie Race Series (10 races + Après)  
Payakentsut & Nationals support with volunteers



# Club organization 2012-13



**Legend**

- Volunteer positions
- Paid positions

- Volunteer Coaches:**
- |                  |                    |
|------------------|--------------------|
| Coral Dawn       | Sarah Sladen       |
| Andrea Peiffer   | Gwendolyn Kennedy  |
| Lisa Rickli      | Tobi Henderson     |
| Nina Cairns      | Cheryl Morningstar |
| Anne Mackie      | Rene Long          |
| Pat Johnston     | Brent Murdoch      |
| Irene Wood       | Alison Isles       |
| Lorraine Vollmer |                    |

# 2013 Highlights



- New Track Attack Race Team attracted 13 kids
- Instigated the Race Support Fee to help cover away race expenses for coach and waxing
- New local Masters Learn to Skate Program successful
- Volunteers for Nationals
- New Toonie Race Series format & covered by Shaw TV:  
<http://www.youtube.com/watch?v=ageWi8MrIMI&feature=youtu.be>
- Secured NWSA grant to retain Head Coach again
- First medal at Nationals: Lauren Doak 3 place Jr. girls Skate 7.5
- First skier on BC Team: 1x BC Team, 2 x BC Development Team, 4 x BC Talent Squad

# 2013 Challenges

- Membership dropped from 269 to 221 (why? Moved from family to individual memberships, losing 20-40yr old demographic: singles and young families before kids enter SDP.)
- Toonie Race numbers dropped (why? Social aspect diminished, single 20-40yr olds no longer attending, racers and their families away at races)
- Lack of volunteer coaches for SDP/lack of confidence in ski ability
- Volunteer burn out: Coast Cup #1, #2, Lost Lake Classic, Payak, Nationals...
- 2013-14 Funding applications are already coming back with smaller amounts than previous years / funding Head Coach position

# The Future

- Expecting to expand Development Race Team with racers from other Sea-To-Sky clubs who don't have a Head/Race Coach (estimate growth from 8 to 21 racers)
- A personal training program being considered for advanced Masters to improve their results and generate funds
- Hold more fundraisers to assist Development Team with travel costs for Nationals in Newfoundland (Creekbread and Ironman)





- Collaborate with Sea-To-Sky corridor clubs to get minimum numbers for Coaching and officials courses AND to host Coast Cup #3
- Women's Camps as a fundraiser: Ski, Spa, Yoga
- Trial: Moving to paid SDP coaches this season and partnering with local ski areas to offer benefits package: reduced trail pass, pro ski deal, contribution to training courses
- Reduced the number of Toonie races from 10 to 4 throughout season, will partner with licensed restaurants to offer a more social après
- No Lost Lake Classic – almost every weekend taken up with racing. Will also ensure less volunteer burn out